

Our Company

An apparel manufacturing brand specializing in all segments: womenswear, kidswear, and menswear ranging from a variety of dresses, tops, bottomwear, and nightwear. Established in 2020, with a vision to become the finest garment manufacturing unit in the Pink City.

With passion and experience in apparel manufacturing, **R.S.Impex's** founder has a crisp understanding of market dynamics. This dedication and enthusiasm eventually led to the establishment of **R.S. Impex** in Jaipur, the Pink City of India. Every garment is diligently manufactured keeping in mind - sustainability, transparency in the process, ethical practices, and standard quality. Within 2 years of inception, we were catering to several brands worldwide - Feathers closet - Jaipur, Kitu Paris - Paris, Atelier Nomade - Paris, Pastel fleur - Malaysia, Ava ting - Malaysia, DS collection - Nepal, Imaima - Berlin, and Bakar - Spain, Lala Fashion - USA.

Our Founder



Romil, a seasoned professional with a degree in Fashion Technology, brings over six years of expertise in garment merchandising and order processing.

With a clear vision and strong determination, he founded this company three years ago, beginning with just a single machine. Driven by his passion for the fashion industry, Romil is dedicated to building a productive and successful business 24x7.



OUR VISION

Our unyielding aspiration to emerge as a premier garment manufacturer is underpinned by well-defined objectives and strategic pathways. Central to our business ethos is an unwavering commitment to customer satisfaction. At **R.S. Impex**, our relentless dedication lies in ensuring our customers' contentment through the delivery of top-tier products, employing resource optimization strategies to their fullest potential. Our concerted efforts revolve around not just meeting but exceeding customer expectations, utilizing our available resources to create unparalleled offerings that resonate with our clients' needs and preferences.



We take immense pride in our devoted makers, our staff members, and the high-quality textiles and garments that we manufacture and export to different parts of the world.



OUR MISSION

Our vision is to attain a global leadership position in the creation and export of premium clothing. Our commitment lies in providing unparalleled services, offering superior quality and cost-efficient materials to our customers. What sets us apart is our unwavering dedication to robust business ethics, setting us apart from competitors. We prioritize customer satisfaction and environmental responsibility, consistently implementing effective measures to cater to our customers' diverse needs.



OUR PLEDGE

Keeping in line with the growing trends, the company has undergone tremendous transformation with regards to readymade garments. We're a company that strives to consistently improve its manufacturing procedures while maintaining our commitment to supplying clothing of the highest quality and unwavering customer satisfaction.

Core Values



The essence of our triumphs: the commitment of our workforce !

One of our primary objectives is to create a safe and nurturing atmosphere for our workforce, enabling them with a means of sustenance through gradual skill development, promoting women's empowerment through equal pay, and also assuring safe and ethical work practices. We strive to provide a safe and healthy workplace for all of our employees.

Our Strength

In a brief span of time, their commitment, dedication, enthusiasm, and diligence has propelled **R.S. Impex** to soaring heights, earning immense love and trust. Our distinctive in-house design, revered for its uniqueness and functionality, adeptly caters to men, women, and kids' clothing needs. Our meticulous designing and manufacturing teams have ensured a wide range of standard quality and sleek, functional designs, which cater effortlessly to both minimal and bulk orders.

A committed ensemble comprising of skilled tailors, production managers, quality checkers, analysts, and sales and marketing professionals ensures consistent quality maintenance and timely order fulfillment. We prioritize the safety and well-being of our workers by implementing robust health and safety standards, for an empowering work environment. Our in-house amenities encompass a garment stitching and finishing unit equipped with steam ironing, dry cleaning, as well as washing facilities.

Our Collections



TOPS - Tops 'n Tees, Shirts, blouses, Shrugs, Tunics, Jackets, Sweater, Cardigan, Sweatshirts, etc.

BOTTOMS - Leggings, Trousers, Pallazos, Culottes, Capris, 3/4th^s, Shorts, Skirts, etc.

COMFORT / LOUNGE WEAR - Kimonos, Dresses, Jumpsuits, Playsuits, Bathrobes, Kaftaan etc.

SPORTSWEAR - Tees and Polo, Track pants, Shorts, 3/4th^s, etc.

SLEEPWEAR - Bottoms, Dresses, Gowns, Maxi, Kaftan, Robe etc.

TOPS - Jackets, Sweater, Sweatshirts, Hoodies, T-shirts, Polo, Shirts (Casuals, Formals), etc.

BOTTOMS - Trousers, Shorts & 3/4th^s, Loungewear, etc.

SPORTSWEAR - Tees, Polo, Track pants, Shorts, etc.

ETHNIC WEAR - Kurta, Bandhgala, Pyjama, etc.



TOPS - Jackets, Sweater, Sweatshirts, Hoodies, T-shirts, Polo, Shirts (Casuals, Formals), etc.

BOTTOMS - Trousers, Shorts & 3/4th^s, Loungewear, etc.

SPORTSWEAR - Tees, Polos, Track Pants, Shorts, etc.

ETHNIC WEAR - Kurtas/Kurtis, Nehru Jackets, Pyjama, Salwar Suits, Tops, Dresses, Churidaar, Leggings, Salwar, Patiala, Harems, Dhoti Pants, etc.

OVERALL - Dresses, Jumpsuits, Playsuits, etc.



The Journey Of **Garment Manufacturing**



TREND FORECASTING

R.S.Impex is constantly aware of the most recent fashion trends worldwide, i.e., what's new and popular in the international market, while also keeping the business demands in mind. This is the most crucial step before beginning the procedure.

DESIGNING ACCORDING TO BUYER'S NEEDS

We understand that for a business to flourish, it must be in tune with the interests and needs of the market it serves. With this in mind, we work diligently to create designs that strive to satisfy both market and corporate requirements while remaining within budget.



PATTERN-MAKING

R.S.Impex is dedicated to delivering perfection. The designs derived from the designers' sketches are developed on the required fabric, followed by precise cutting of the silhouettes according to the specifications, and the garment is given its final shape by stitching. Each and every piece is given its final form with a great eye for detail.

TOILE FINALIZING

R.S.Impex adheres to this required procedure in which each garment is finished identically to the original - the garments that receive final approval. This is done to assist the buyer and their team in understanding the quality of the clothing and any potential modifications that can be made.



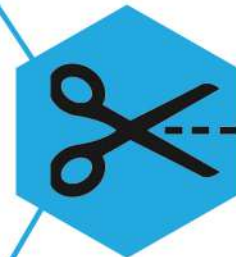


ORDER APPROVAL

Once the buyer and their team have approved the toile or draft garment, then commences the final manufacturing of clothes while keeping a close eye on the smallest of details.

CUTTING

They are then carefully cut using paper patterns, advanced tools, and skilled professionals, all under the supervision of R.S. Impex's experienced manufacturing staff. This is the first and most carefully managed phase of garment production.



QUALITY CHECK

Our skilled quality inspectors and checking team meticulously oversee every step, from fabric cutting to the finishing of the final product. As per the buyer's specifications, they carefully examine even the smallest details in colors, dyes, weaving, printing, and other components to ensure they meet the required standards. At R.S. Impex, maintaining high quality is a top priority, and this critical process is diligently followed by every staff member, equipped with tech packs and buyer requirements.

HAND EMBROIDERY

Large quantities of raw fabric are processed in their natural state and then dyed or printed as needed also embroidery is done by machine/ hand depending on the need of the garment. Strictly every things is checkedby highly experienced professional



STITCHING

Each piece of fabric is carefully cut into precise shapes and patterns, and then adorned with intricate details such as embroidery, print direction, and additional trims as per the order. Our skilled tailors expertly stitch the fabric pieces together, giving them their final shape to create a truly bespoke garment



QUALITY CHECK

At R.S. Impex, maintaining exceptional quality is of utmost importance. Every garment undergoes a step-by-step inspection by the Quality Control Team, starting from the fabric selection to the final finished product. This thorough process ensures each piece meets the required design, measurement specifications, and manufacturing standards before advancing to the next stage.

PACKAGING

After successfully passing the quality checks, the garments move to the packaging stage, where every detail undergoes a final inspection. Tags are securely attached, and each item is meticulously folded and packed into individual packets, ensuring they are perfectly prepared for shipping in the boxes.



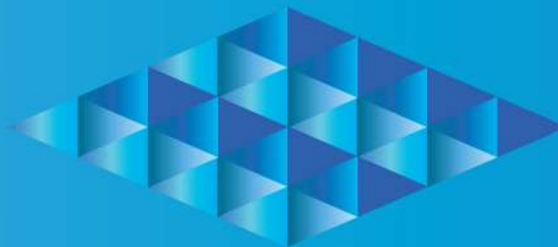
DISPATCH

R.S. Impex takes pride in delivering orders promptly and securely. The team ensures that every shipment reaches customers on time and in perfect condition, offering complete accountability and assistance at every step of the delivery process.



Locate Us

Floor No: 1St Floor
Building No./Flat No: WS-1, No.1, 1, No.1,
Road/Street: Malviya Nagar
Locality/Sub Locality: Near K.S. Ford Service Cente,
Malviya Nagar Industrial area
City/Town/Village: Jaipur
District: Jaipur Rural
State: Rajasthan
PIN Code: 302017



Contact Us



romil@redstoneimpex.in



+ (91) 902-451-7386